

- **Inner Call**
User can call other apartments by pressing **ALARM** button. To start the Inner call, first you need to setup a dial number on the monitor.

How to setup the dial number on the monitor?

- Keep pressing **UNLOCK** button until you hear a long beep. Start setting 2 digit dial number.

MONITOR button refers to first digit 1~9

UNLOCK button refers to 0 / confirm.

Eg. Set the dial number to 09.

press **UNLOCK** (Long beep) – press **UNLOCK** – press

MONITOR 9 times – press **UNLOCK**

Set the dial number to 10.

press **UNLOCK** (Long beep) – press **MONITOR** 1 time – press

UNLOCK –press **UNLOCK**

Set the dial number to 12.

press **UNLOCK**(Long beep) – press **MONITOR** 1 times – press

UNLOCK – press **MONITOR** 2 times -press **UNLOCK**.

How to change the ring tone?

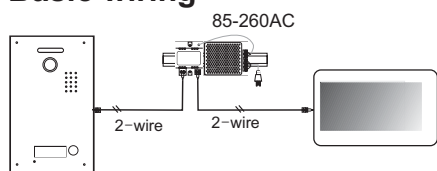
Keep pressing **TALK** button until you hear a long beep, current ring tone will be displayed.

Press **ALARM** button to choose the ring tone you want.

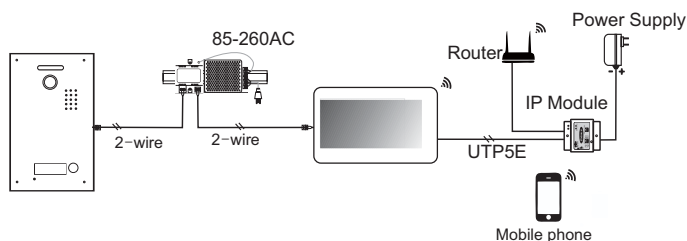
Press **TALK** button again to save and exit.

4. Wiring Diagram

Basic wiring

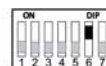
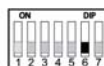


With IP Module Wiring



5. User Codes (Monitor bit codes) Setup

- Every room station must have an **ID**, set through the bit codes(list right)
- Bit-1 to Bit-5 are used to configure the room **ID**.
- Bit-6 is the line-terminal switch, set the **LAST** monitor to **ON**, otherwise set **OFF**.
- Bit-7 is to turn the ringtone at the door station **ON/OFF**.
- You can have a Max of 4 monitor per button/code.



Monitor NOT at the end of the line

Monitor at the end of the line

Bit state	User Code	Bit state	User Code	Bit state	User Code
	Code=1		Code=12		Code=23
	Code=2		Code=13		Code=24
	Code=3		Code=14		Code=25
	Code=4		Code=15		Code=26
	Code=5		Code=16		Code=27
	Code=6		Code=17		Code=28
	Code=7		Code=18		Code=29
	Code=8		Code=19		Code=30
	Code=9		Code=20		Code=31
	Code=10		Code=21		Code=32
	Code=11		Code=22		

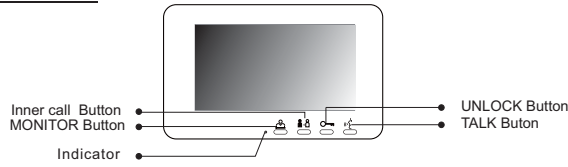
- Power supply: DC 24V (supplied by adaptor)
- Power consumption: Standby 15mA, working 350mA
- Wiring: 2 wires, non-polarity

VIDEO DOOR PHONE

USER MANUAL

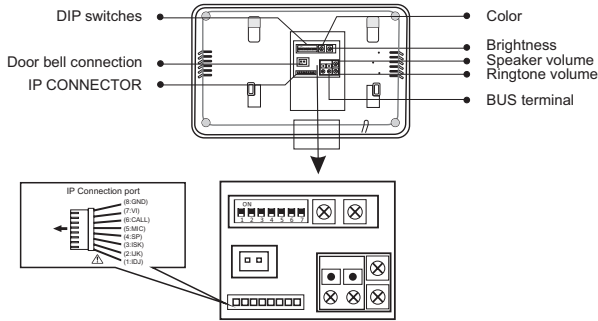
1. Parts and Functions

PL806-7

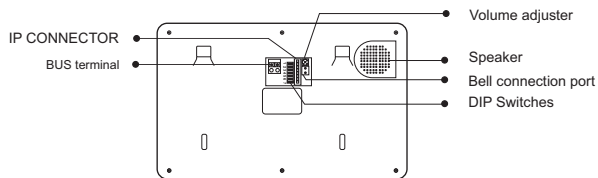
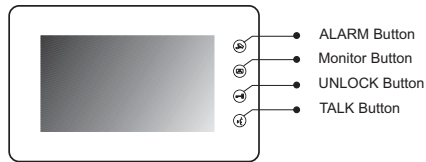


Indicator light colors description

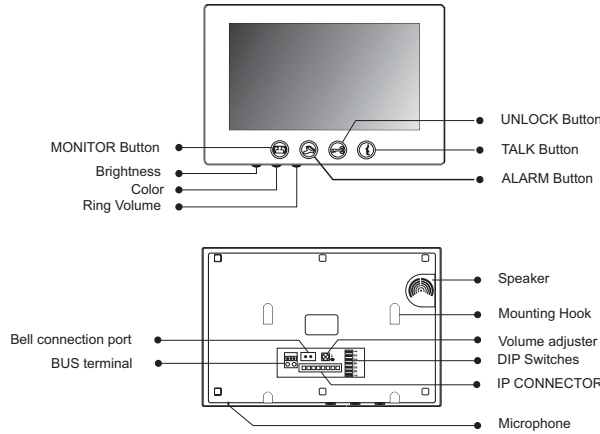
- Cyan: During Inner call;
- Green: During outdoor station calling;
- Green flashing: When user has missed the calling, who can press any buttons to delete this;
- Pinkish purple: During monitor the Extra camera setting
- Yellow: During internal room ID number setting.



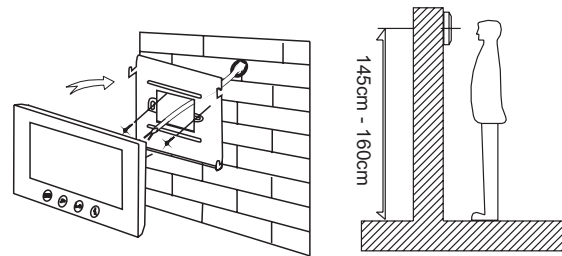
PL836-7W & PL836-7B



PL829-10W & PL829-10B



2. Monitor Mounting



Using the screws to fix the Mounting Bracket on the wall. Connecting the system correctly, then hang the Monitor on the mounting bracket firmly

3. Operation Instructions

Answering a door call

- Press **CALL** button on door station, the monitor rings, the **CALL** visitor can be seen on the monitor screen. If nobody answers the call, the screen will automatically turn off in 30 seconds. To answer an incoming call, press **TALK** to answer, calls last for 90 seconds-you **DO NOT** have to hold talk to enable voice communication. Press **TALK** again to end the conversation. If the system connects with two or more monitors, answering any monitor, the others will turn off automatically.

If there is an extra camera, during and incoming call, press **MONITOR** switch to see the view of extra camera.

• Door Release

During the conversation with the visitor, press **UNLOCK** button to unlock the door.

• Monitoring

Press **MONITOR** button while in standby mode you will be able to see the view of outdoor station camera. Press **MONITOR** again switch to next door station camera or extra camera. Press **TALK** button twice to exit.(firstly you should have finish setting door station camera and extra camera, see bellow).

• How to set door station camera and extra camera?

Keep pressing **ALARM** button until you hear a long beep. Start setting state of multiple door station and extra camera. Press **MONITOR** as many times as the quantity of specific code of door state.

For example :

There are 3 door stations, 2 door station with extra camera, specific code of door state is 8.

Keep press **ALARM** (Long beep) – press **MONITOR 8** time – press **ALARM**

There are 1 door stations, 0 door station with extra camera, specific code of door state is 1.

Keep press **ALARM** (Long beep) – press **MONITOR 1** time – press **ALARM**

The form of the special code of the door state is as follows:

Door state	Specific code	Door state	Specific code
1 Door 0 Cam	Code=1	3 Door 2 Cam	Code=8
1 Door 1 Cam	Code=2	3 Door 3 Cam	Code=9
2 Door 0 Cam	Code=3	4 Door 0 Cam	Code=10
2 Door 1 Cam	Code=4	4 Door 1 Cam	Code=11
2 Door 2 Cam	Code=5	4 Door 2 Cam	Code=12
3 Door 0 Cam	Code=6	4 Door 3 Cam	Code=13
3 Door 1 Cam	Code=7	4 Door 4 Cam	Code=14